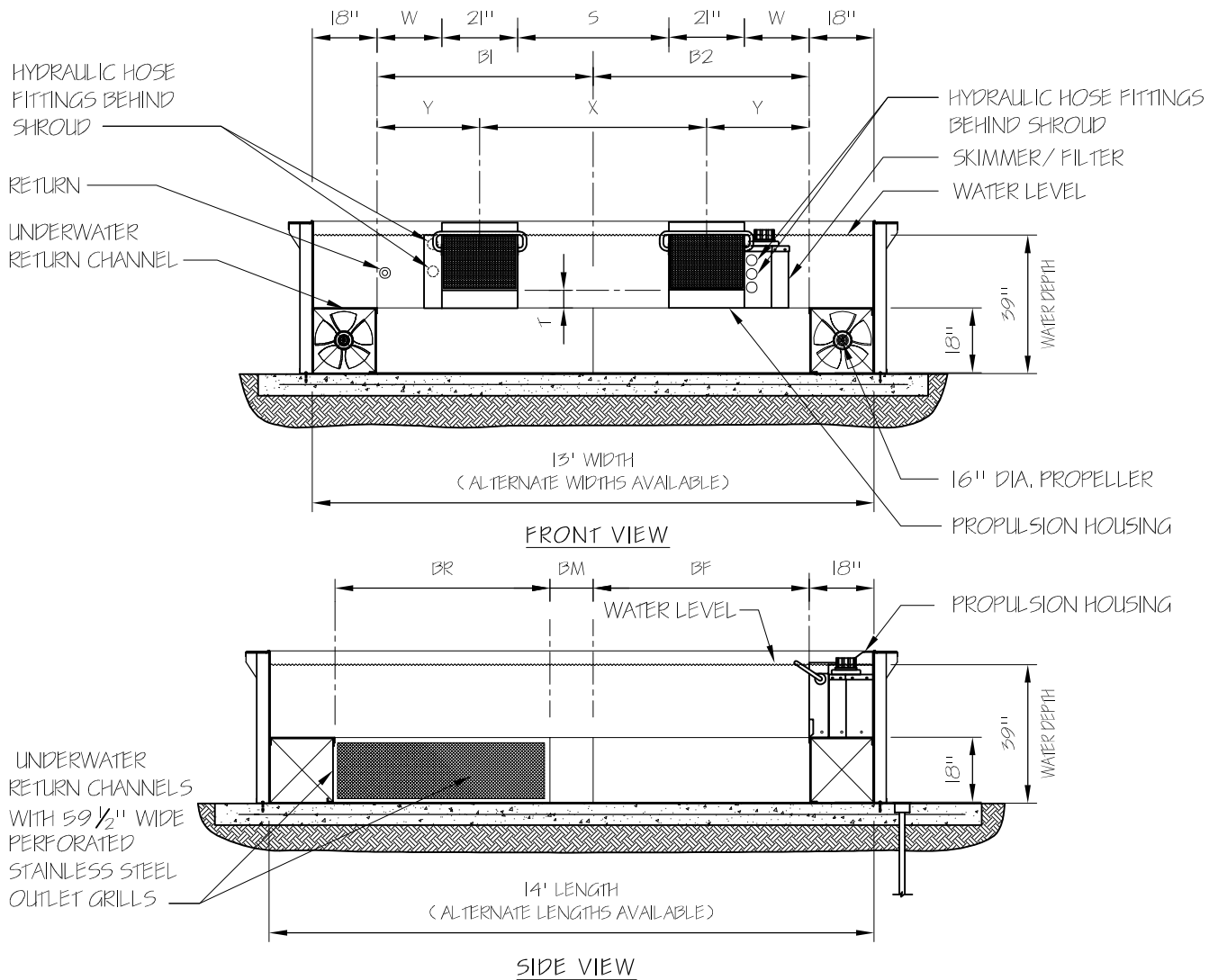


"NOMINAL DIMENSIONS"							
WIDTH	W	S	X	Y	B1	B2	(for panels heights)
13' (standard)	24"	30"	51"	34.5"	5'	5'	(42", 48", 54")
14' (optional)	24"	42"	63"	34.5"	5'-6"	5'-6"	(42", 48", 54")
15' (optional)	30"	42"	63"	40.5"	6'	6'	(42", 48", 54")
16' (optional)	30"	54"	75"	40.5"	6'-6"	6'-6"	(42", 48" ONLY)

HOUSING (21" wide x 16" tall)	
HEIGHT	Throat (T)
42"	5"
48"	11"
54"	17"

"NOMINAL DIMENSIONS"				
LENGTH	BR	BM	BF	(for panels heights)
13' (optional)	5'	0'	5'	(42", 48", 54")
14' (standard)	5'	0'	6'	(42", 48", 54")
15' (optional)	5'	2'	5'	(42", 48", 54")
16' (optional)	5'	3'	5'	(42", 48" ONLY)



**ENDLESS POOLS®**  
 SWIMMING MACHINES  
 1601 Dutton Mill Road, Aston PA 19014  
 www.endlesspools.com  
 swim@endlesspools.com 800-732-8660

**DUAL PROPULSION ENDLESS POOL**  
 (42"H PANELS SHOWN)

DETAIL NUMBER:

**EP-13.0A**

DUAL PROPULSION DETAIL

12/26/12